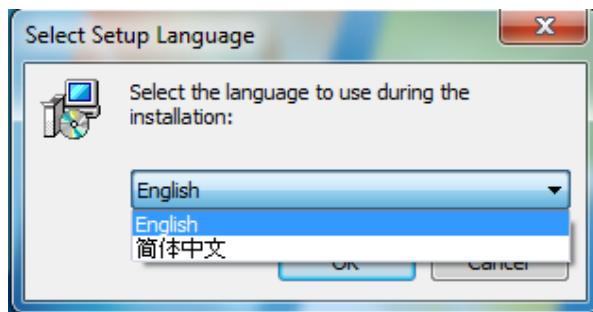


BayLan

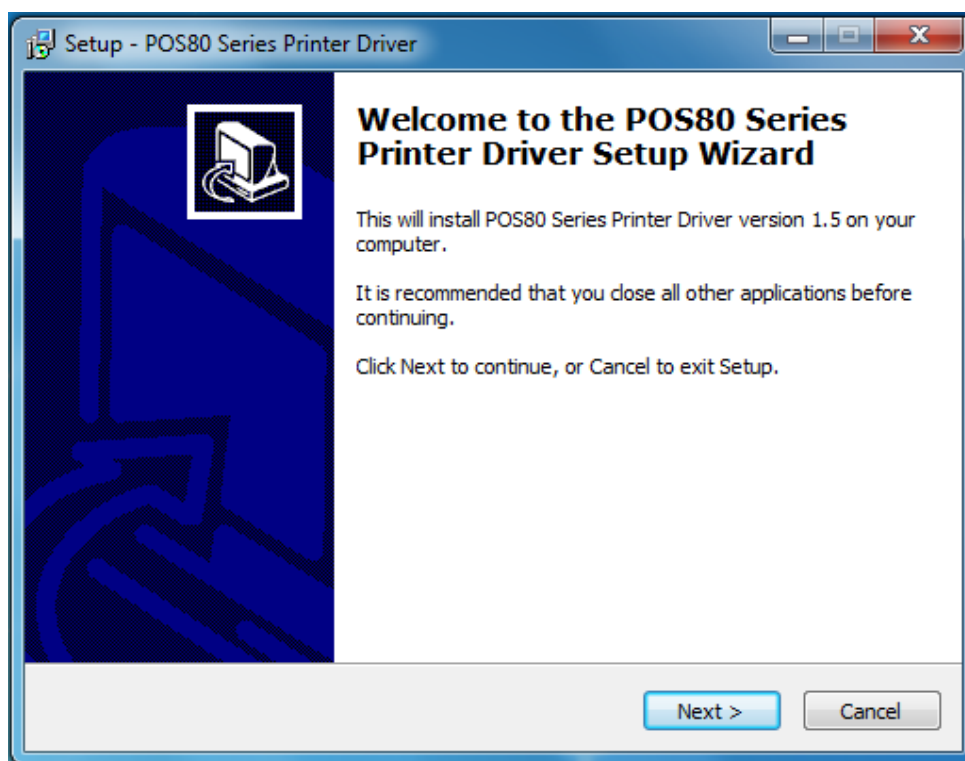
POS80-300IIIB

Driver Installation

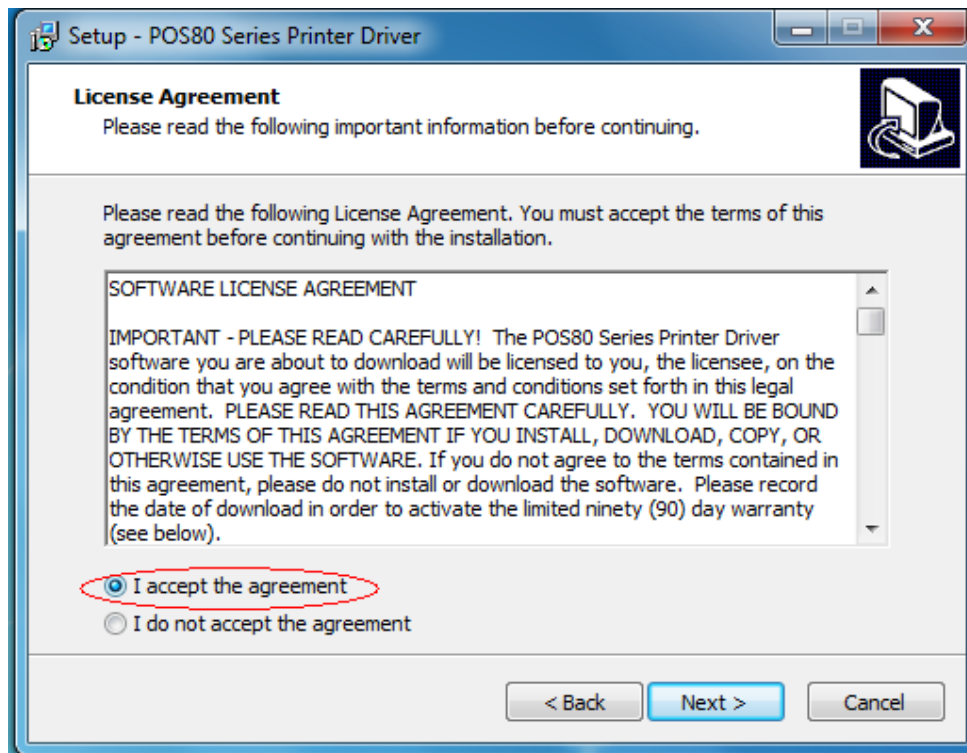
- 1) Insert the driver CD, in the menu click CD files to start in Install, select the language you want. We recommend that choose “English” as the language. Then click on “OK” to continue, see the following icon:



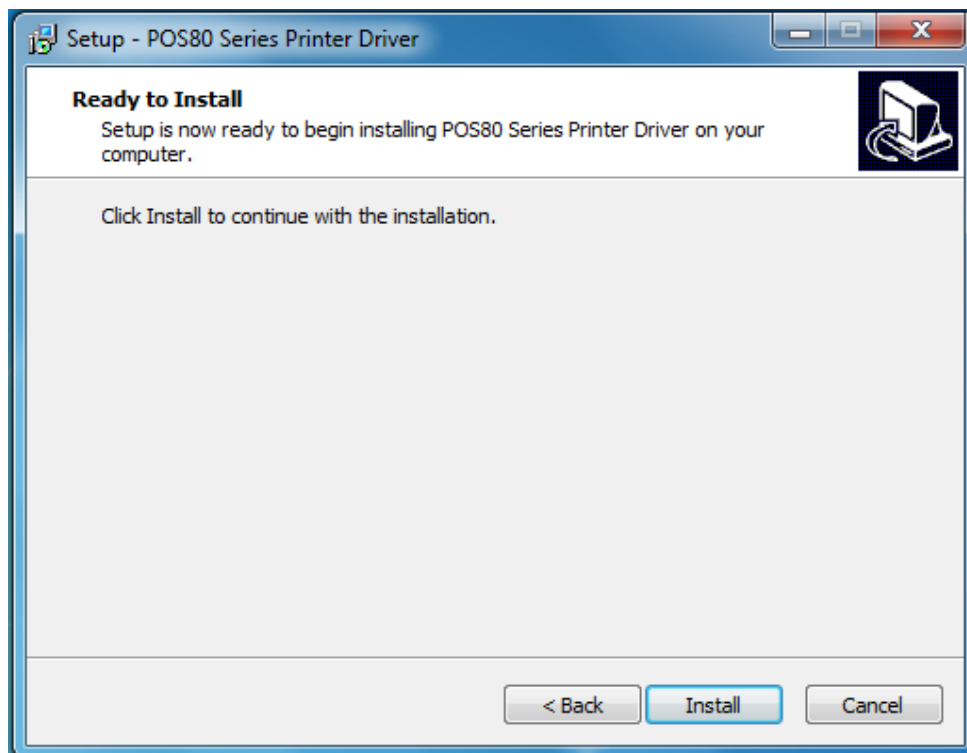
- 2) click on “Next” to continue



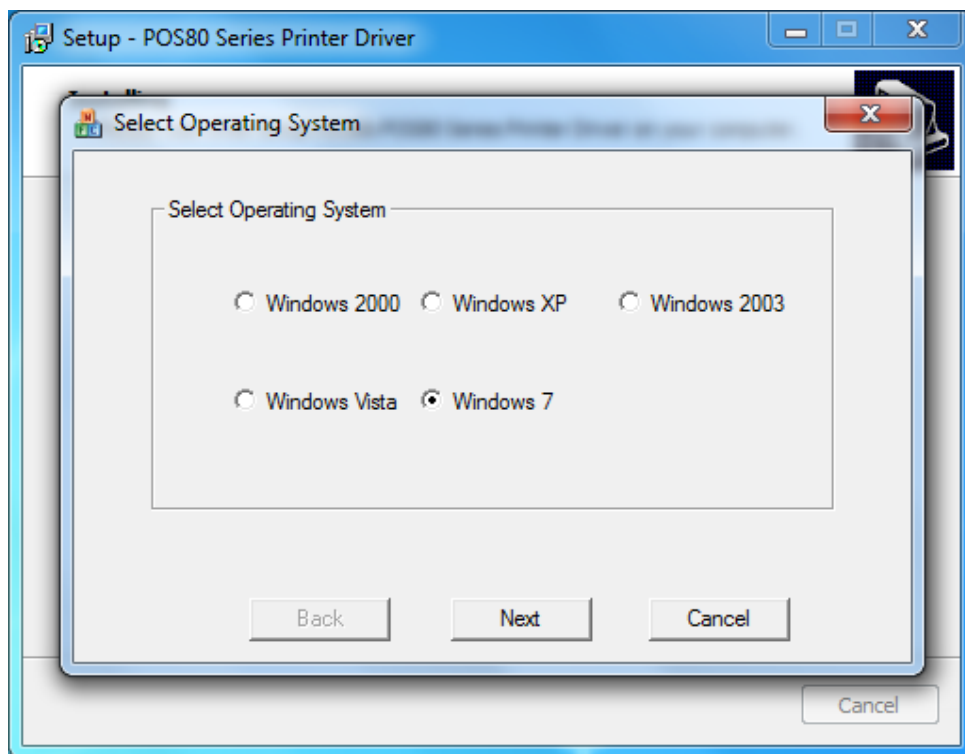
- 3) Please read the terms of the software instructions, choose to accept and continue the installation, see the following icon:



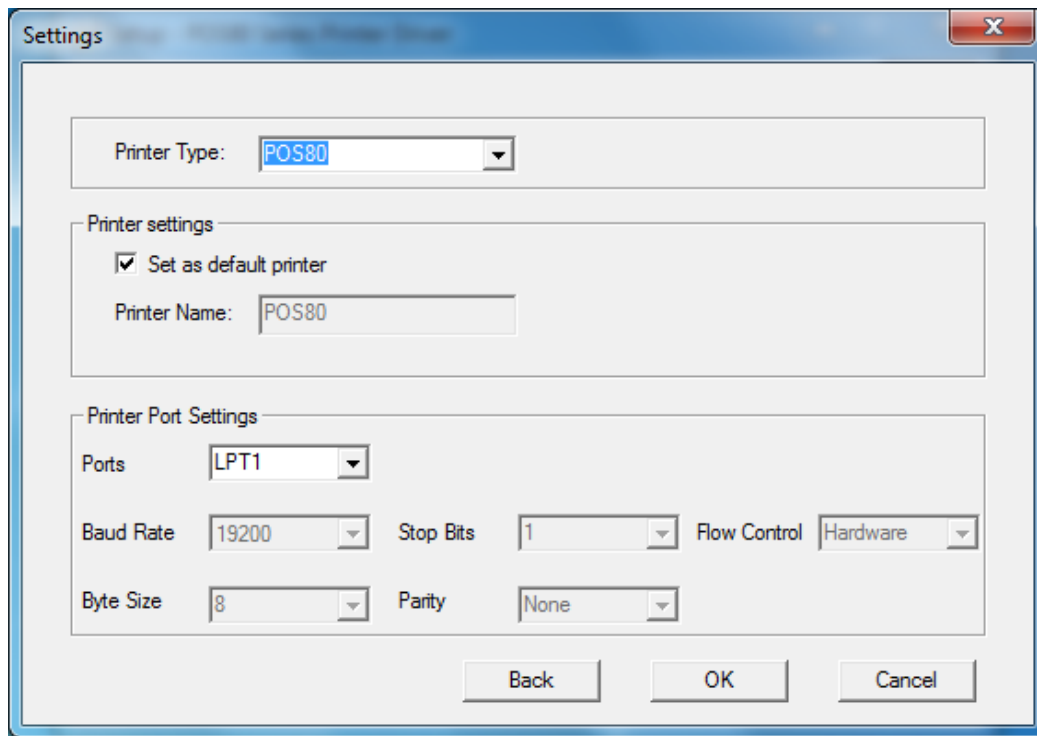
- 4) Click on "Install" to continue



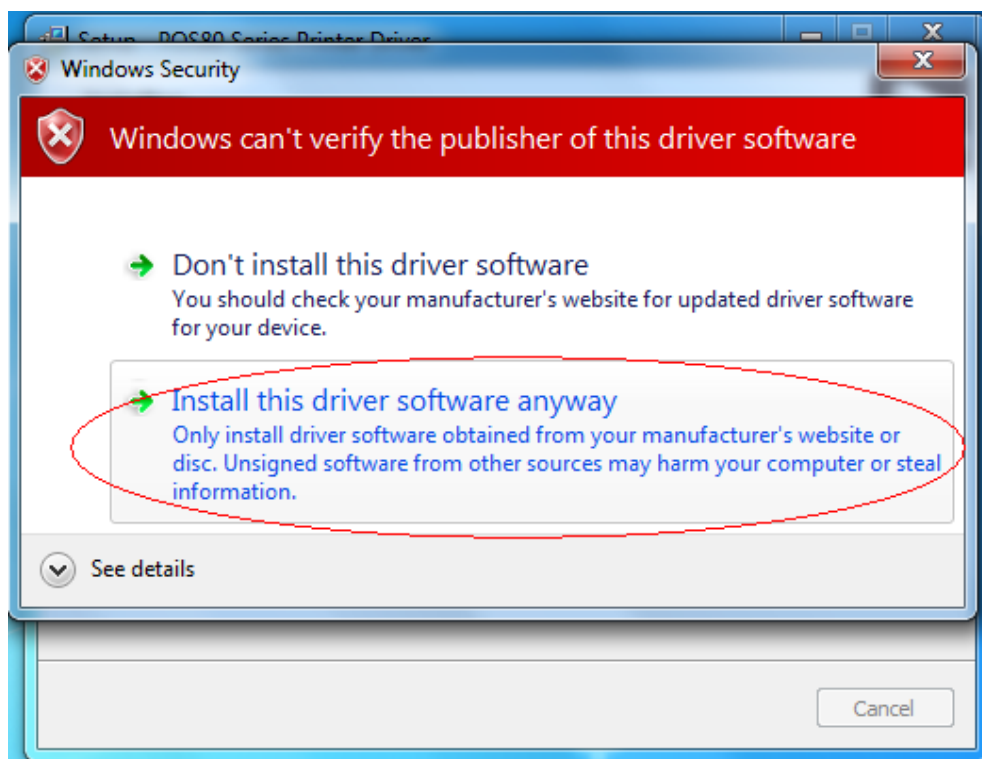
- 5) Select match your computer's operating system, click Next to continue installation, see the following icon:



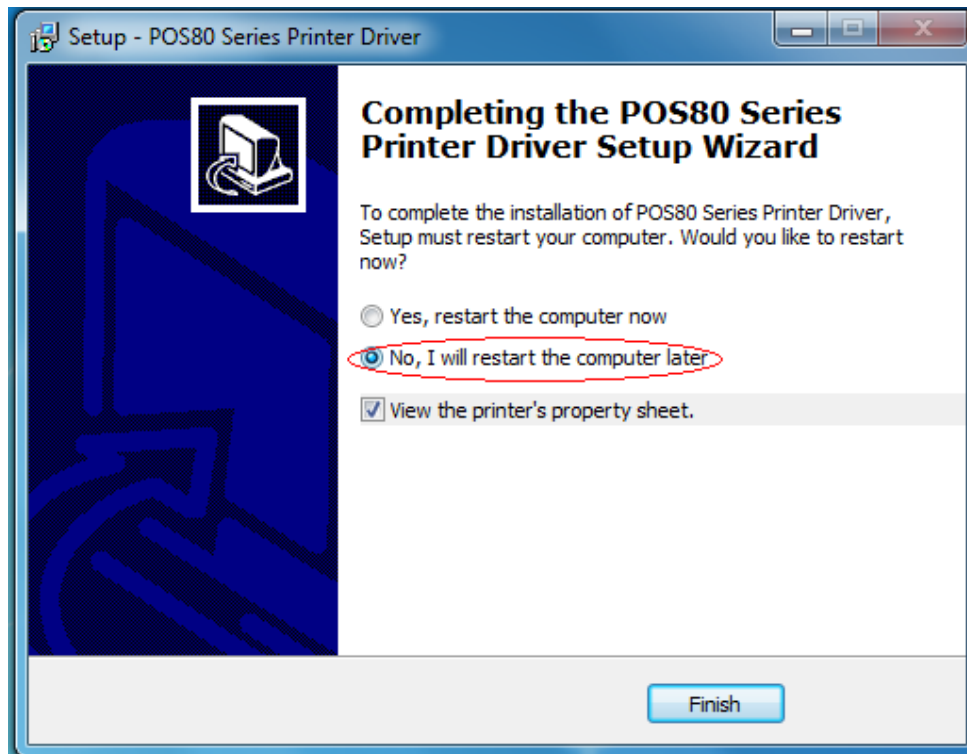
- 6) Select the appropriate drive name or the installation of the module, click on the end of the installation, see the following icon:



7) Just click on “Continue Anyway” to continue

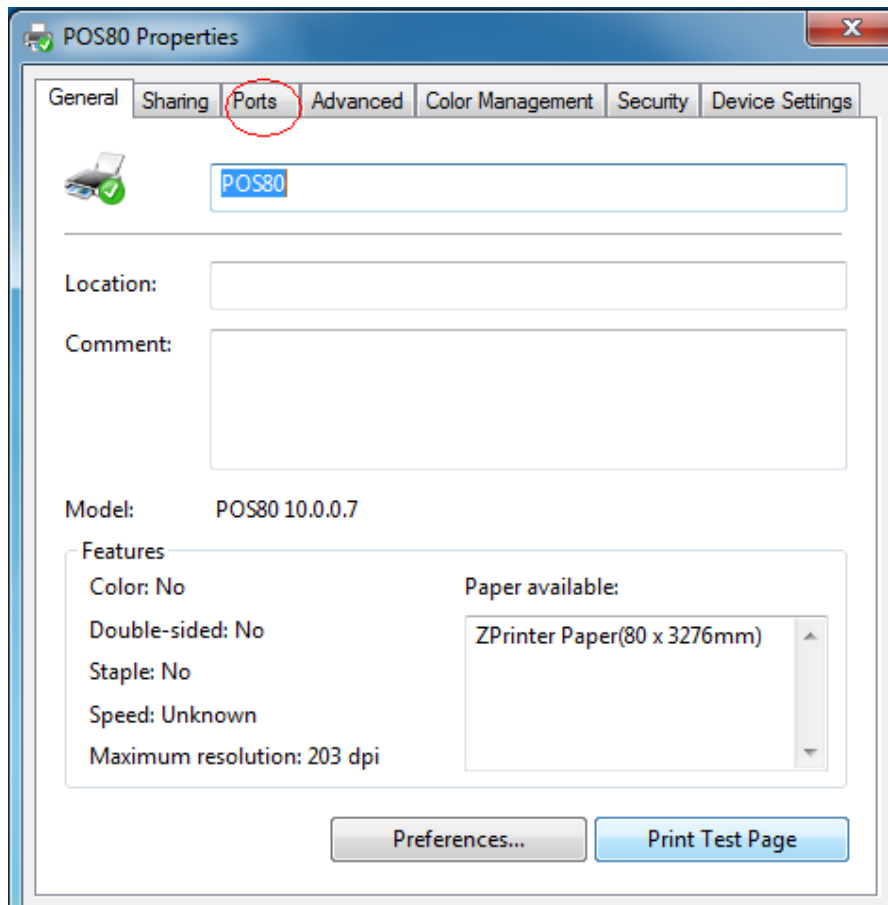


8) In this step , if you see restart option, click on “ **No, I will restart the computer later**”, then click on “ **Finish**” .

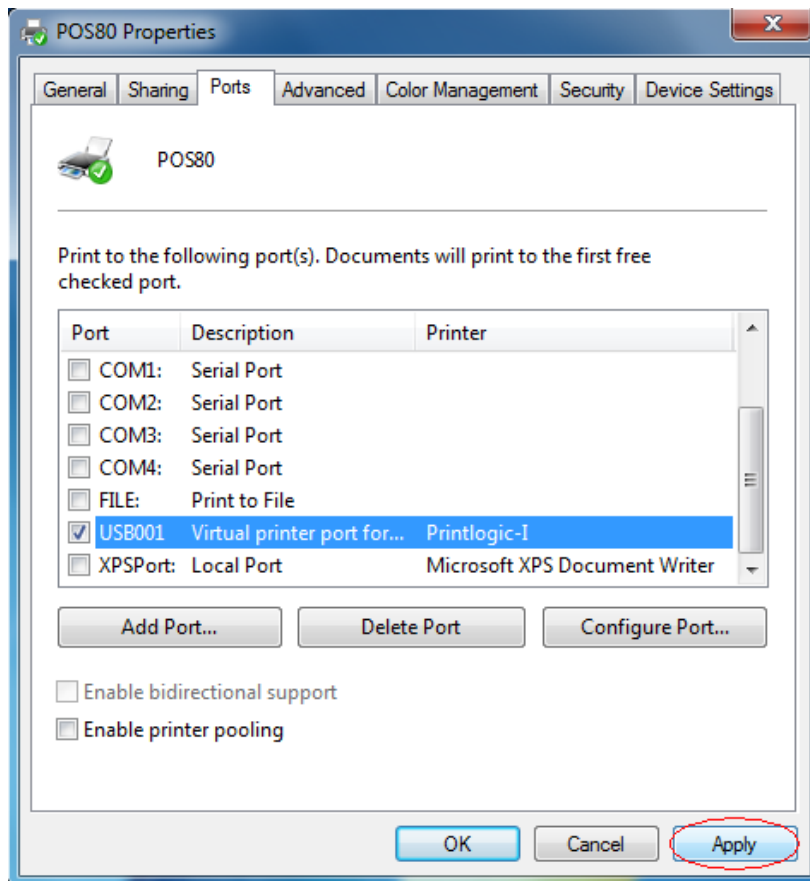


USB setting instructions

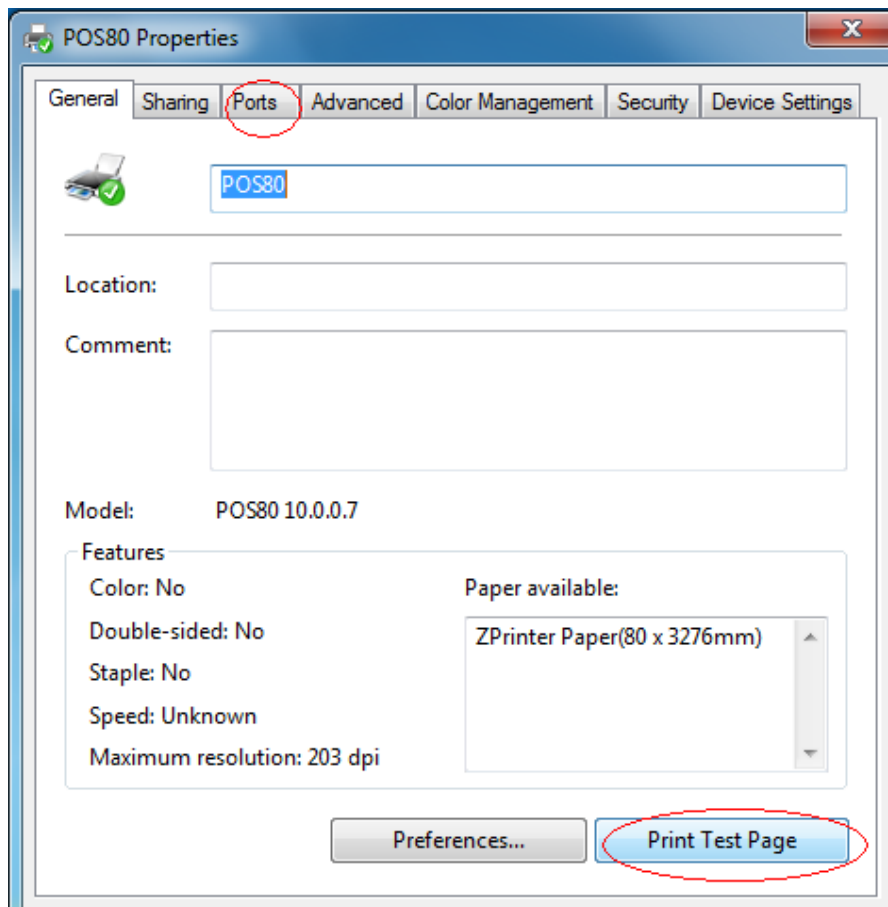
- 1) First of all need to properly connect your printer and computer. Open the printer properties of the interface, and then select the "ports".



2) Then try to choose the other USB ports, “**USB001**” then click on “**Apply**”.



3) Select the printer properties port "**conventional**", click "**Print test page**".



If the printer prints a normal page then it indicates that the driver works successfully. You can use the printer right now, then you don't have to read the content as below.

//*****//

If the printer doesn't print anything , and the driver shows error message. then maybe the Ports setting is wrong, Please click on "**Ports**", try to choose the other USB ports, "**USB002**" then click on "**Apply**" ,and next click on "**General**"→click on "**Print Test Page**" to try again.

If the printer prints a normal page, then it indicates that the driver works successfully .You can use the printer right now.

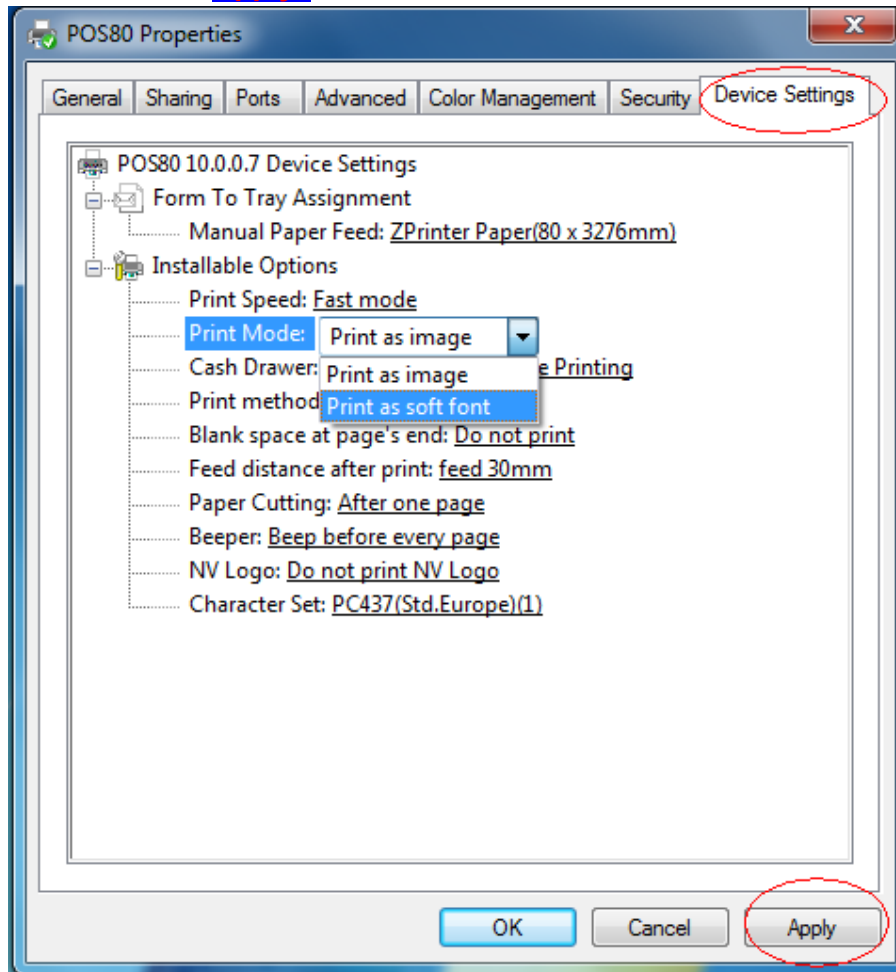
if still not print correctly , try to change port "**USB002**" to "**USB003**" or "**USB004**" ,then click on "**Apply**", until the printer prints a normal test page.

If you have tried all the usb ports, the printer doesn' work at all, please ask for after-sale supports.

//*****//

Soft font setting instructions

Open the printer properties, select " **Device Settings**", can be found in the installation options" **print mode**", select" **Print as soft font**", and then click on "**Apply**".

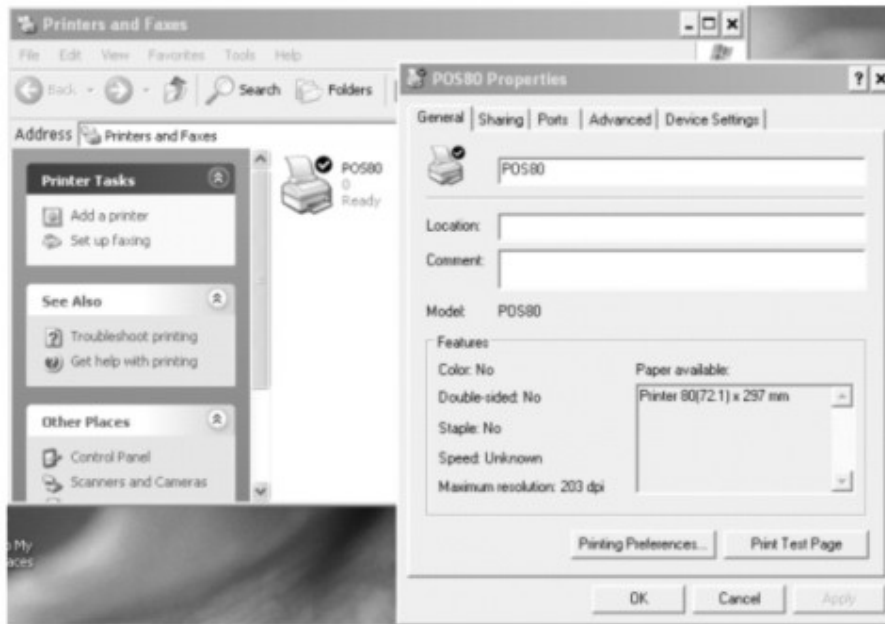


Ethernet setting instructions

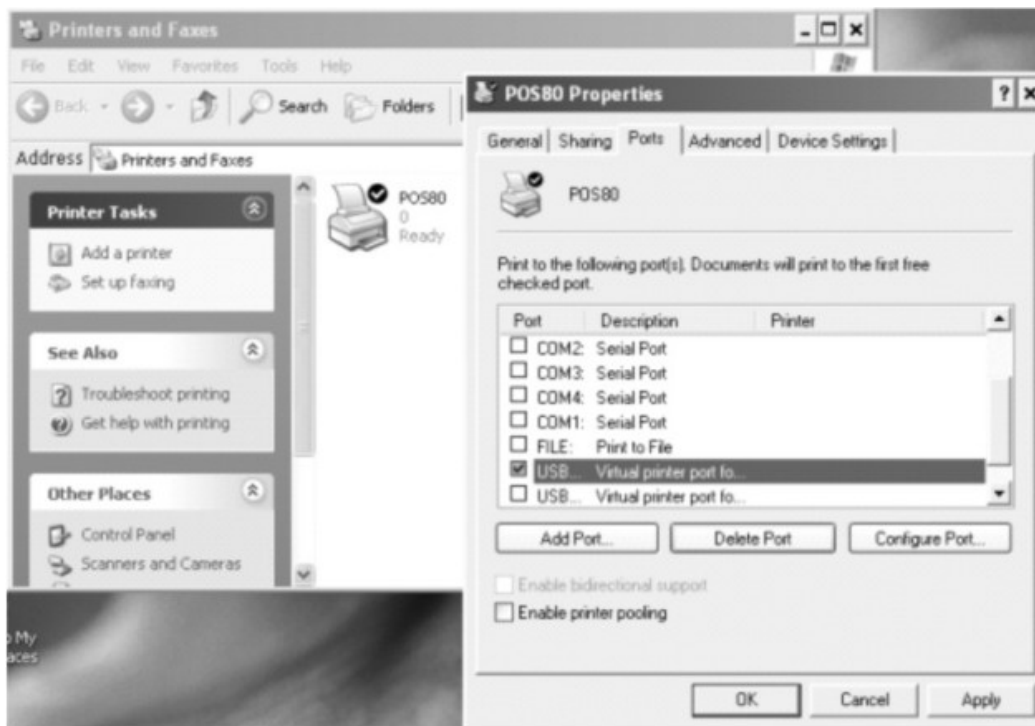
1, through the self-test to obtain the IP address of the machine
self testing the printer(press the "feed" on the printer, don't move your hand, and also open the power of the printer, 5 seconds, move your hand off the "feed", then the printer will print and get the IP address in the paper

2, As the following icons to set network port

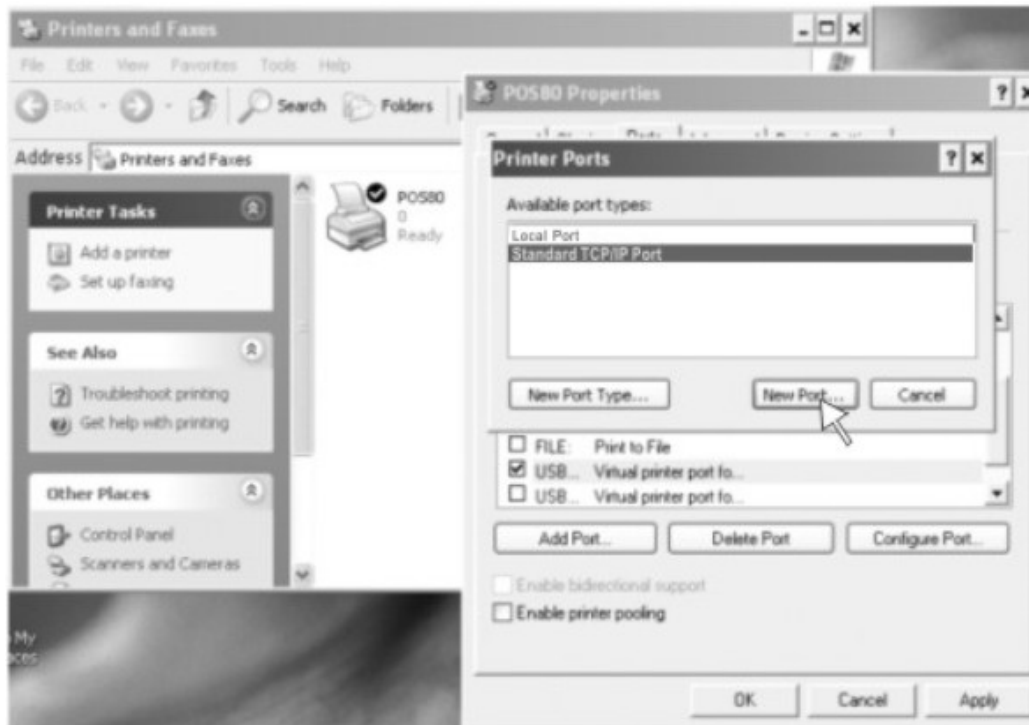
1) Determine the printer driver installed successfully, and click on the printer driver, select "Properties", see the following icon:



2) Select the "Port", click “add port”, as shown:



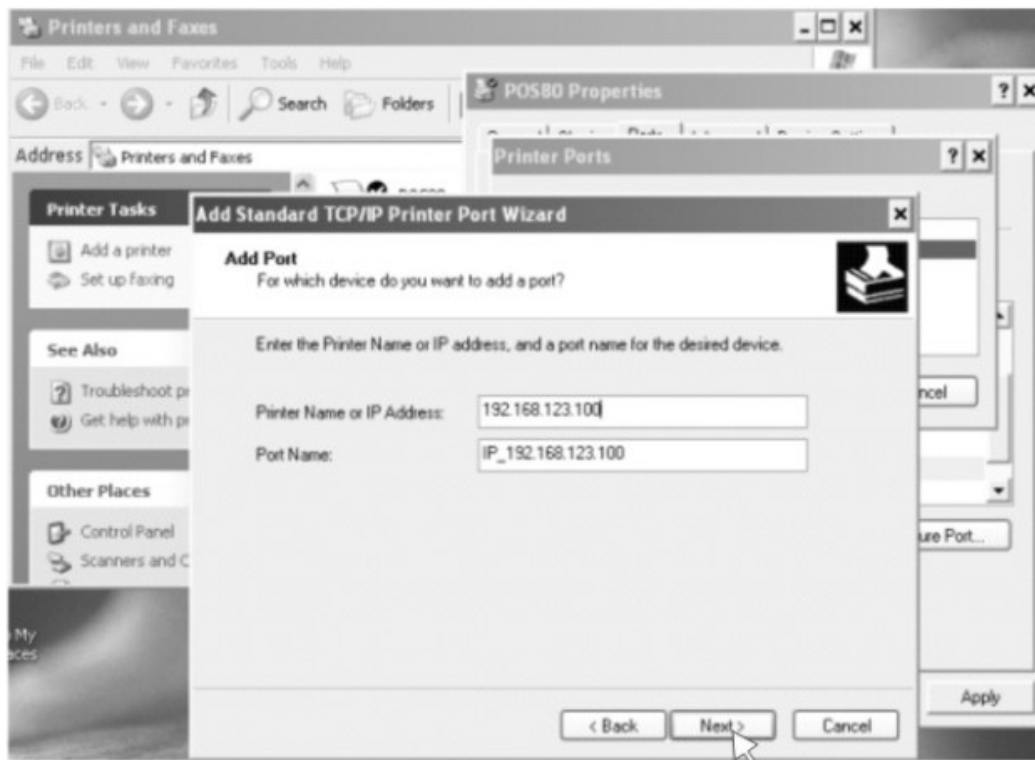
3) choose ‘standar TCP/IP port’-----click “new port”, as shown:



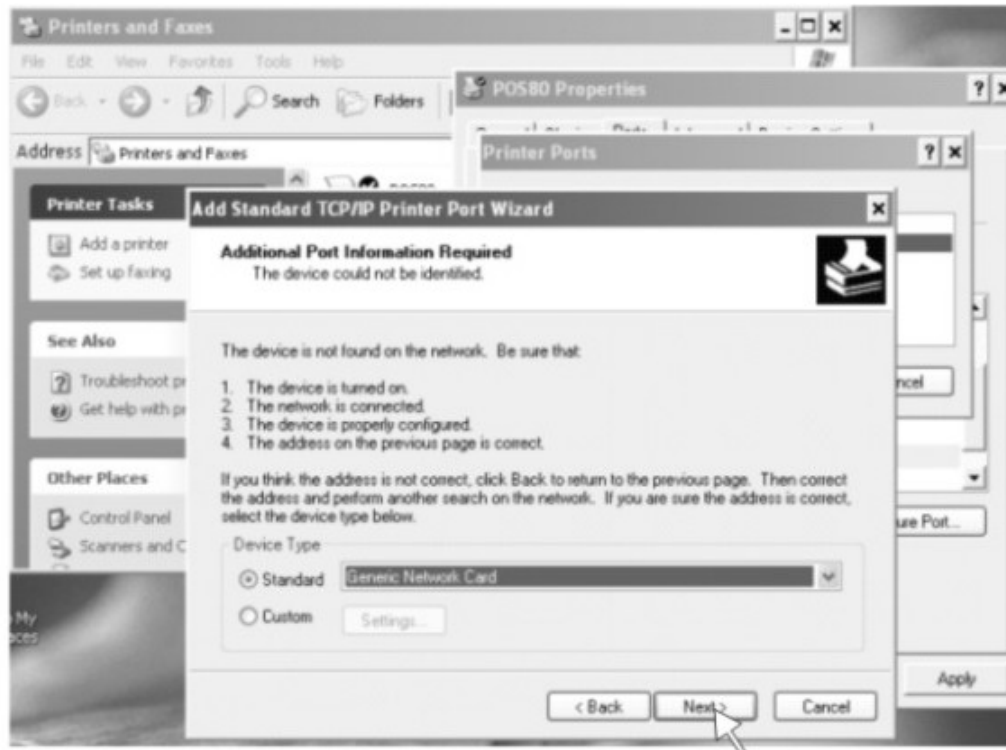
4) according to Add Standard TCP / IP Printer Port Wizard, click Next to continue installation, as shown:



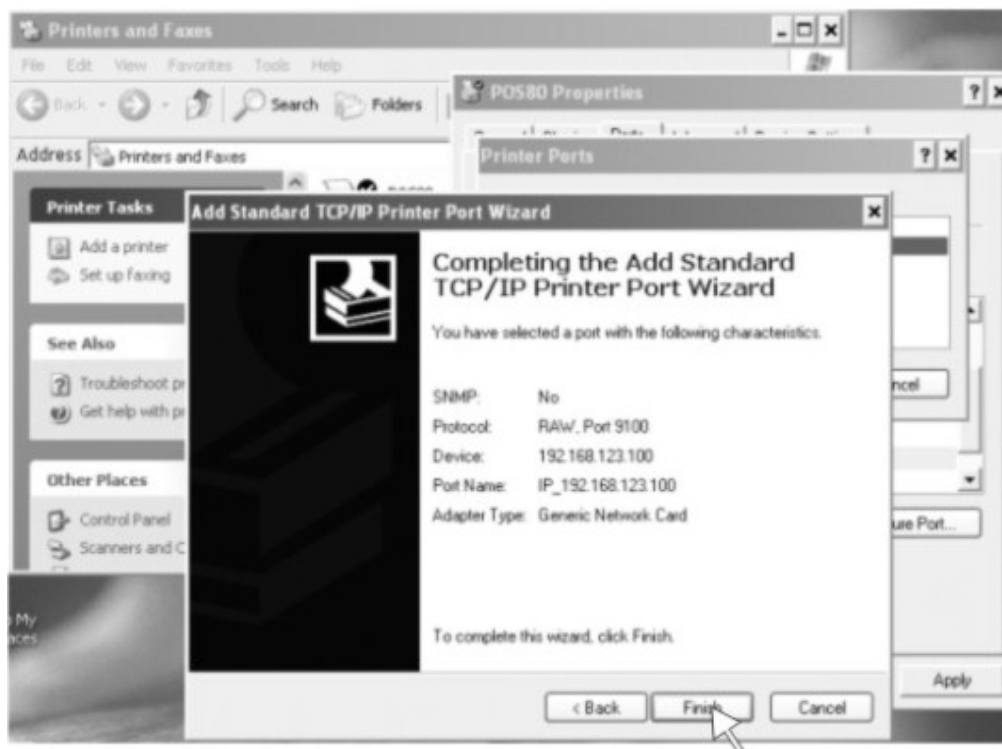
- 5) according to self-test print of bill IP address enter IP, and then click Next to continue installation, as shown:



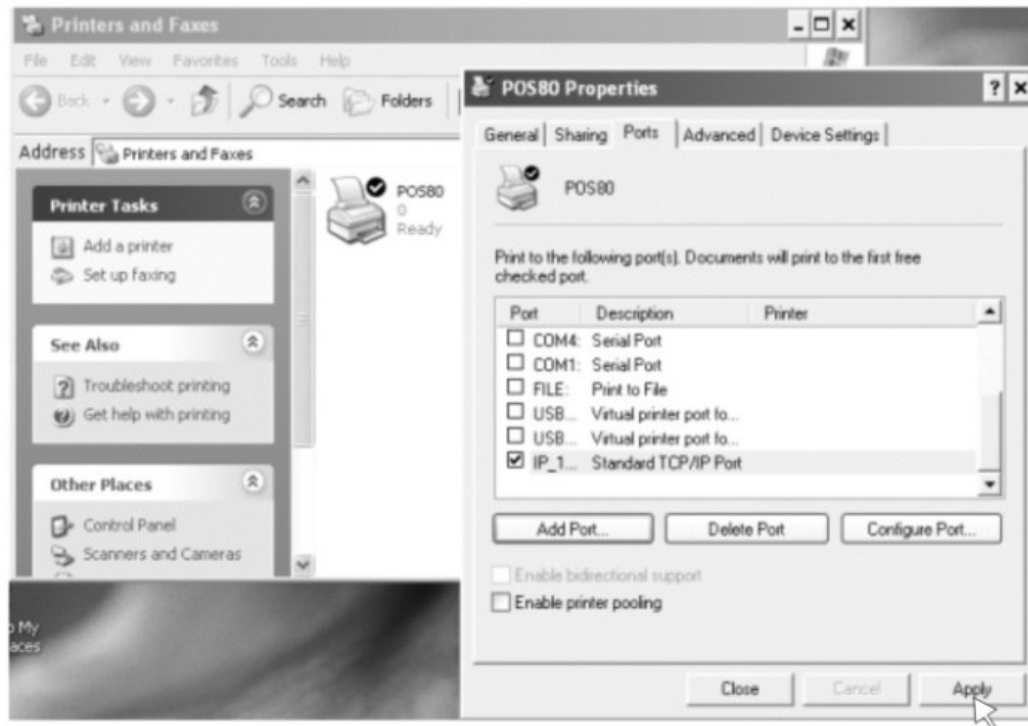
- 6) according to Add Standard TCP / IP Printer Port Wizard, select the device type --- the standard way, and then click Next to continue installation, as shown:



7) , according to Add Standard TCP / IP Printer Port Wizard, click Finish to complete the installation, as shown:



8), according to the printer driver "Properties", click the port, select the correct IP port, click Apply, you can print a test page, as shown:



Clean of printer

When the printer has the following conditions should clean the print head:

1. The printer does not clear
2. The page frame lengthways of printer has some not clean
3. Paper feed has a large noise

Printer cleaning steps are as follows:

- (1) Close the printer's power, Open the Top Cover, If it have paper, please wipe off paper.
- (2) If it just complete to print, must wait for the print head cooling.

- (3) With a soft cotton cloth dipped in ethanol (to be wrung) erase the thermal printer head thermal surface dust, stains
- (4) When will wait for the complete evaporation of anhydrous ethanol after, the closed Top Cover, re-test print

Notice

- (1) Printer routine maintenance to ensure that the power is turned off
- (2) Don't use your hands and the surface of metal objects touch the printer head surface, can not use forceps and other tools to scratch the print head, printing rubber roller and the sensor surface.
- (3) Don't use gasoline, acetone and other organic solvents
- (4) When will wait for the complete evaporation of anhydrous ethanol after, then turn on the power to print

If any problem contact BayLan Technical Centre.

<mailto:support@baylan.com>